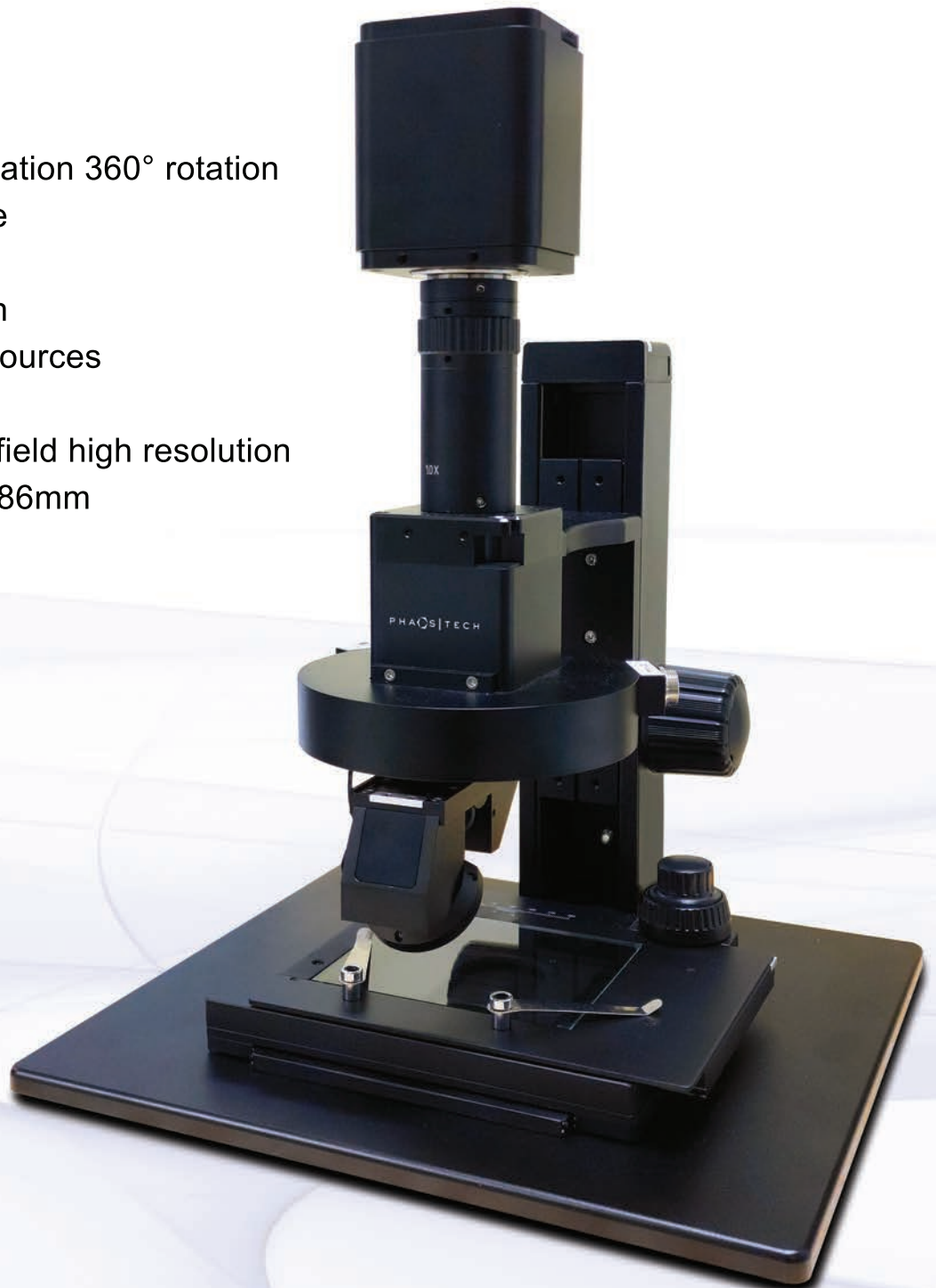


PT Zoom Series

PTZ B+

- Real-time image observation 360° rotation
- Rotate speed adjustable
- Continuous zoom
- Multi angles observation
- Front & side LED light sources
- Brightness adjustable
- Wide range of depth of field high resolution
- Working distance up to 86mm
- Auto Focus
- Z-stacking



**Motorised Zoom function available in other models*

PT ZOOM

Automatic 3D 360° video stereoscopic microscope has long working distance, wide field of view and high-definition imaging quality. Based on the two-dimensional observation, rotating three-dimensional observation function is added, its simple to push and pull to switch. Real-time image observation and 360° rotation, which makes unilateral specimen easy to be observed in all directions, multi-directionally.

Equipped with two types of light sources: front light and side light, which perfectly solves the problem of light dark angle.

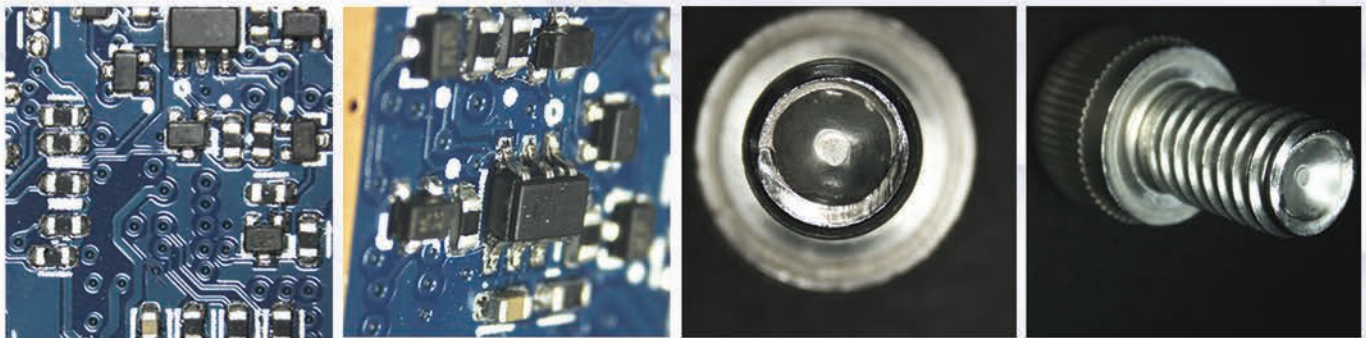
It is widely used in electronic components, precision hardware, deep hole wall, life science, animal and plant morphology, criminal investigation, and identification and so on.

Our range of PT Zoom solutions designed to cater to all your comprehensive needs. Whether you prefer fully motorised zooming or a more intuitive approach, we've got you covered!

Standard Specifications		
Pixel Size (µm)	2	
Zoom Magnification	0.6x - 5.0x	
Pixel Accuracy for X, Y (µm) *	Low Magnification	± 25
	Mid Magnification	± 7
	High Magnification	± 5
Field of View (X x Y mm)	12.8 x 7.2 - 1.5 x 0.9	
X Travel Range (mm)	60	
Y Travel Range (mm)	60	
Z Travel Range (mm)	60	
Overall Product Size (LxWxH)(mm)	330 x 300 x 470	
Overall Product Weight (kg)	8.3	
Lens Type	Zoom Lens	
Working Distance (mm)	2D: 86 3D: 50	
Zoom Ratio	1 : 8.3	
Lens mount	C mount	
Observe mode	2D Observation	
	Automatic 360 degrees rotation 3D observation	
	Push and pull switch	
Software	Z Vision	

* Magnification Low: 0.6 - 1x; Mid: 1 - 3x; High: 3 - 5x

Samples Images



2D View



3D View

2D View



3D View

