

MAGNUM 620

Customizable Reliability



Magnum 620E

**HIGH
BACKPRESSURE
CAPABLE**
(D-STYLE CONTROL ONLY)

**PTFE/PFA FLUID
PATH**

**NON-STALL
AIR LOGIC**
(RELIABLE OPERATION IN
DIVERSE APPLICATIONS)

**NO ELASTOMER
O-RING SEALS**

**QUICK RELEASE
BASE**

**MULTIPLE OPTIONS
FOR FEEDBACK
AND CONTROL**

The Magnum 620 was designed with innovative thread-on pump heads to help end-users service this pump more easily. It's a completely non-metallic pump with no tie bolts. In addition, the updated design improved the pressure capability of the pump for more rigorous process demands. The newest control style, the 620D, is capable of delivery and recirculation in applications where system backpressures are high and variable.

This is PURE INNOVATION.



MAX FLOW

41.6 LPM / 11 GPM 620R/E
39 LPM / 10.3 GPM 620D



MAX TEMPERATURE

110 °C / 230 °F 620R/E
100 °C / 212 °F 620D



MAX PRESSURE

80 PSI / .55 MPa



DRY SUCTION LIFT

9' / 2.7m

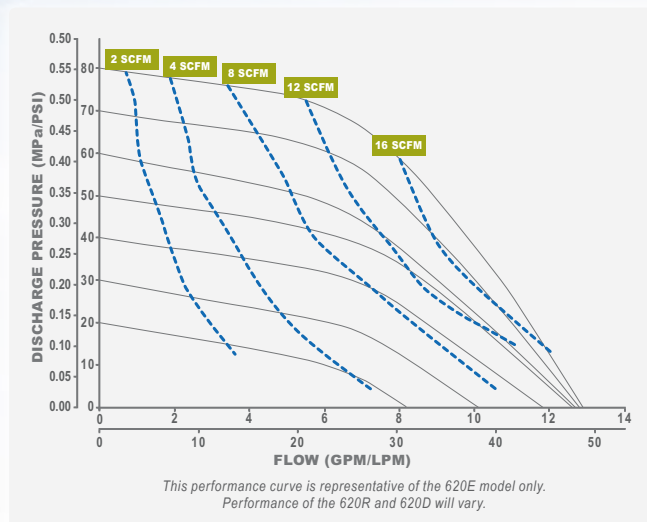
TREBOR

Trebor International | North/South America +1 800 669 1303 | Europe +49 9120 1804-65 | Asia +65 6684 7319

treborintl.com

A Unit of IDEX Corporation

FLOW PERFORMANCE



PUMP OPTIONS

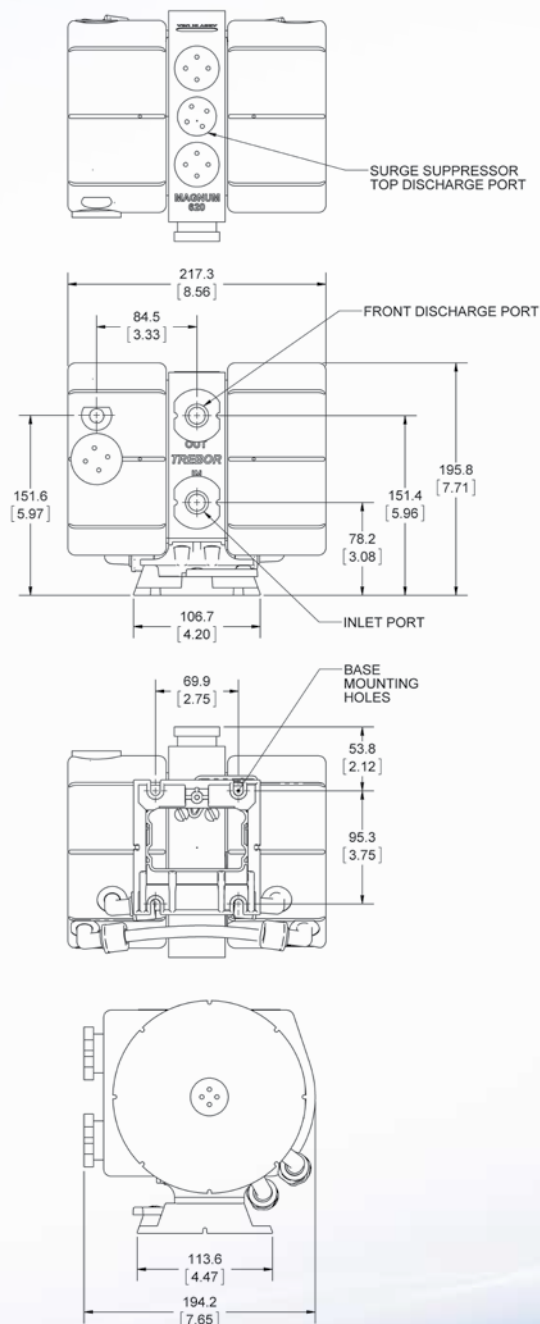
PUMP	
620R	Magnum 620 Recirculation Pump
620E	Magnum 620 External Control Pump
620D	Magnum 620 Delivery Pump
FLUID CONNECTION	
00000	1" NPT - No Adapter Fittings
F0800	1/2" Flare Tube Adapter
F1200	3/4" Flare Tube Adapter
T1200	3/4" PFA Tube Stub-Out
OPTIONS	
A0	No Option
A1	Cycle Probe
A2	Remote Exhaust (620R and 620E Only)
A3	Leak Probe
A5	End of Stroke Sensor and Leak Probe (620E Only)
A6	Alternate Base 1-Piece Molded Base for 620R and 620D Quick Release Base for 620E
A7	Cycle Probe and Leak Probe
A8	End of Stroke Sensor with Plugs (620E Only)
A9	End of Stroke Sensor with Cycle Probes (620E Only)

Example of an order number based on configuration options:

620E	F1200	A6
------	-------	----

Compatible with our SS40 and SS85 surge suppressor

DIMENSIONS IN MILLIMETERS (IN.)



MAGNUM 620D MODEL SHOWN

Refer to website for measurements of 620E and 620R.

Trebor uses virgin PTFE and PFA in all products...no re-processed material is allowed.

Trebor International | North/South America +1 800 669 1303 | Europe +49 9120 1804-65 | Asia +65 6684 7319

TREBOR®

treborintl.com

A Unit of IDEX Corporation